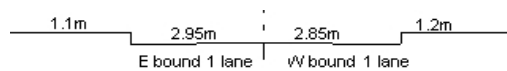
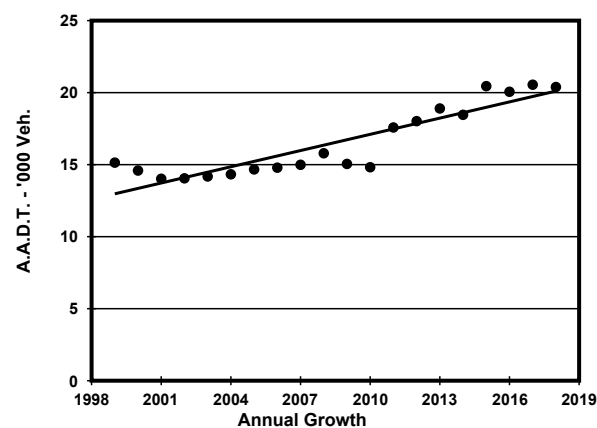
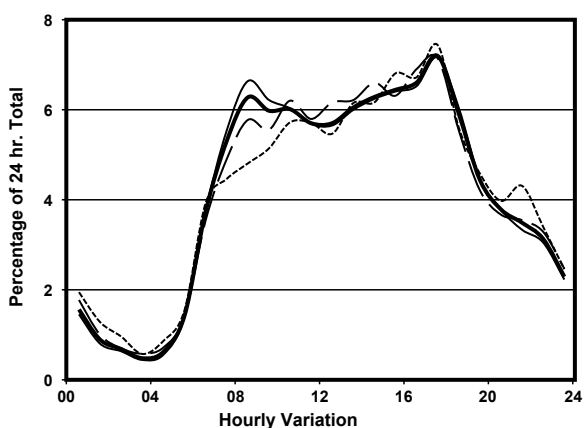
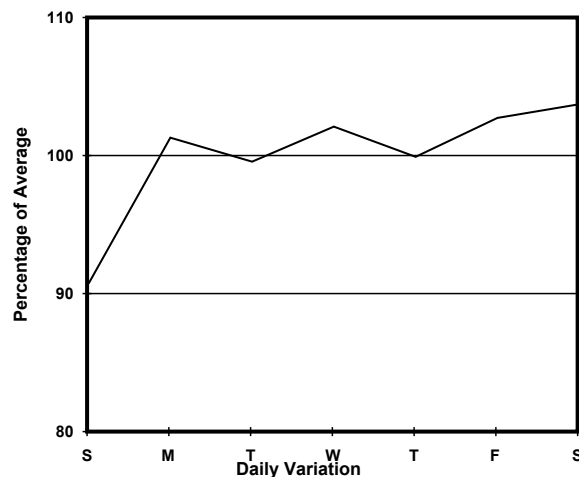
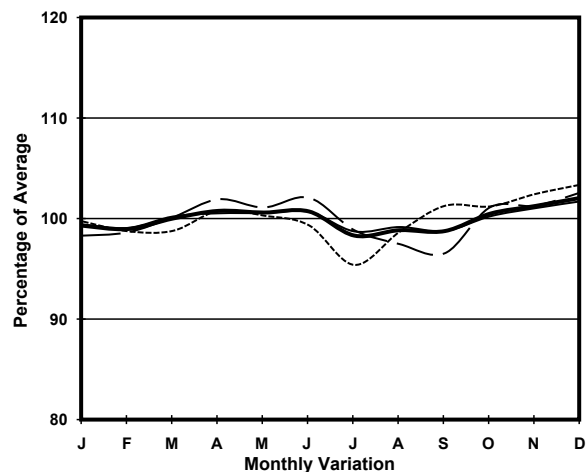


YEAR 2018
 COVERAGE (B) STATION 6207
 ROAD NETWORK MAJOR
 ROAD TYPE RURAL ROAD

LINK KAM TIN RD (from KAM SHEUNG RD WESTERN JUNCTION to FAN KAM RD)



1. TRAFFIC FLOW VARIATION AND GROWTH



2. TRAFFIC CHARACTERISTICS (BY DIRECTION)

Parameter	All - Day	Mon. - Fri.	Sat.	Sun.
EAST BOUND				
A.A.D.T.	10250	10530	10930	8550
R 12 / 24 - %	72	73.4	70.9	65
R 16 / 24 - %	89.4	90.3	88.1	85.9
AM Peak Hour	0800-0900	0800-0900	0900-1000	0900-1000
One-way flow at AM peak hour	670	770	660	390
T - % (AM)	-	5	-	-
PM Peak Hour	1700-1800	1700-1800	1600-1700	1700-1800
One-way flow at PM peak hour	680	700	700	560
T - % (PM)	-	5.7	-	-
Prop.of commercial vehicles - 16 hr.	-	8.3	-	-
WEST BOUND				
A.A.D.T.	10140	10190	10330	10040
R 12 / 24 - %	74.9	74.9	75.5	74.6
R 16 / 24 - %	87.2	87.2	87.5	86.9
AM Peak Hour	0700-0800	0700-0800	0700-0800	0700-0800
One-way flow at AM peak hour	620	610	680	630
T - % (AM)	-	8.5	-	-
PM Peak Hour	1700-1800	1700-1800	1700-1800	1700-1800
One-way flow at PM peak hour	790	780	840	820
T - % (PM)	-	2.5	-	-
Prop.of commercial vehicles - 16 hr.	-	9.4	-	-

3. OTHER INFORMATION AND COMMENT

4. Vehicle classification and occupancy - Monday to Friday

Time		Class of vehicle									
		Motor Cycle	Private Car	Taxi	Private LB	PLB	Goods veh.		Non Fr. Bus	Fr. Bus	
							Light	M & H		SD	DD
0700-0800	Pro	1.6	49.1	8.7	2.4	8.3	20.2	7.1	0.4	0.4	1.8
	Ocp	1.0	1.7	2.0	5.3	13.1	1.8	1.2	1.0	40.3	38.8
0800-0900	Pro	0.9	55.2	9.6	0.9	6.1	20.0	5.2	0.9	0.1	1.2
	Ocp	1.0	1.5	2.1	6.3	14.6	1.7	1.1	11.7	34.5	35.3
0900-1000	Pro	1.8	45.0	10.1	1.2	3.6	22.5	13.3	1.2	0.1	1.2
	Ocp	1.0	1.4	1.8	1.5	13.7	1.5	1.2	1.0	19.0	19.3
1000-1100	Pro	0.8	57.0	5.6	0.0	3.4	24.4	7.1	0.0	0.2	1.5
	Ocp	1.0	1.4	1.7	0.0	11.3	1.5	1.1	0.0	15.0	13.6
1100-1200	Pro	0.8	54.2	4.7	1.6	4.7	18.8	13.0	0.4	0.2	1.7
	Ocp	1.5	1.3	2.0	2.0	10.2	1.4	1.2	1.0	11.0	13.1
1200-1300	Pro	0.7	56.1	9.1	0.3	2.8	21.3	7.7	0.7	0.2	1.1
	Ocp	1.0	1.4	1.8	1.0	14.4	1.5	1.3	10.5	16.0	14.5
1300-1400	Pro	1.0	48.7	8.7	1.0	3.7	26.4	9.3	0.0	0.3	1.0
	Ocp	1.0	1.5	2.0	1.7	12.1	1.5	1.1	0.0	14.0	15.8
1400-1500	Pro	0.3	44.3	9.1	1.6	2.6	30.9	9.4	0.0	0.2	1.4
	Ocp	1.0	1.5	1.6	2.8	10.6	1.4	1.3	0.0	14.3	12.0
1500-1600	Pro	0.9	50.6	4.4	1.3	2.5	27.5	10.4	0.9	0.2	1.3
	Ocp	1.0	1.5	2.4	5.3	14.5	1.4	1.2	7.3	9.5	12.9
1600-1700	Pro	1.0	57.9	6.1	3.2	3.2	20.6	6.1	0.6	0.2	1.0
	Ocp	1.0	1.4	2.4	4.6	13.3	1.5	1.3	13.5	23.0	18.1
1700-1800 Peak hour	Pro	3.0	56.1	6.0	0.6	3.3	27.1	2.1	0.3	0.2	1.2
	Ocp	1.0	1.5	1.7	1.5	16.2	1.6	1.0	1.0	24.3	30.8
1800-1900	Pro	1.4	71.7	4.5	0.6	4.5	12.0	3.1	0.6	0.1	1.5
	Ocp	1.0	1.5	1.6	1.0	16.1	1.4	1.4	1.5	20.0	24.5
1900-2000	Pro	1.4	72.3	6.6	0.3	5.2	10.8	1.4	0.3	0.3	1.4
	Ocp	1.3	1.4	2.0	1.0	13.5	1.3	1.0	1.0	15.3	21.0
2000-2100	Pro	1.5	58.3	14.7	0.5	8.8	9.8	3.9	0.5	0.4	1.7
	Ocp	1.0	1.6	1.5	3.0	10.2	1.5	1.3	1.0	16.0	16.9
2100-2200	Pro	3.7	55.5	19.3	0.6	6.2	10.0	1.9	0.0	0.5	2.2
	Ocp	1.3	1.5	1.9	2.0	8.7	1.4	1.3	0.0	15.0	14.0
2200-2300	Pro	1.2	63.9	15.2	0.0	5.5	8.5	3.0	0.0	0.2	2.4
	Ocp	1.0	1.4	1.7	0.0	10.2	1.9	1.4	0.0	6.0	12.9
16 hours	Pro	1.3	55.8	8.3	1.0	4.4	20.3	6.7	0.5	0.2	1.4
	Ocp	1.1	1.5	1.9	3.5	12.8	1.5	1.2	5.6	19.6	20.0

Legend

Pro. Proportion of vehicles in % (Sum may not add up to 100% due to figure rounding)*

Ocp. Average occupancy of vehicles including both driver and passengers*

M&H Medium and Heavy

***** All traffic data are collected from combined bounds except for one way traffic